

pas sa caille

79

A handwritten musical score for a piece titled "pas sa caille". It consists of two staves of music. The top staff begins with a treble clef and a 3/4 time signature. The music is written in a simple, rhythmic style with many eighth and sixteenth notes. There are several accidentals, including a sharp sign and a flat sign. The number "79" is written in the upper right corner of the score.

Passa caille
pour vne femme
dancée par M. ^{lle}
Subligny en Angleterre
de lopera d'armide

A handwritten musical score for a piece titled "Passa caille". The score is written in a highly decorative and stylized manner, with many flourishes and intricate line work. It is arranged in a vertical, somewhat irregular layout. The text above the score provides context: "Passa caille pour vne femme dancée par M. ^{lle} Subligny en Angleterre de lopera d'armide". The music itself is written on several staves, with various clefs and time signatures, and includes many accidentals and ornaments.

80

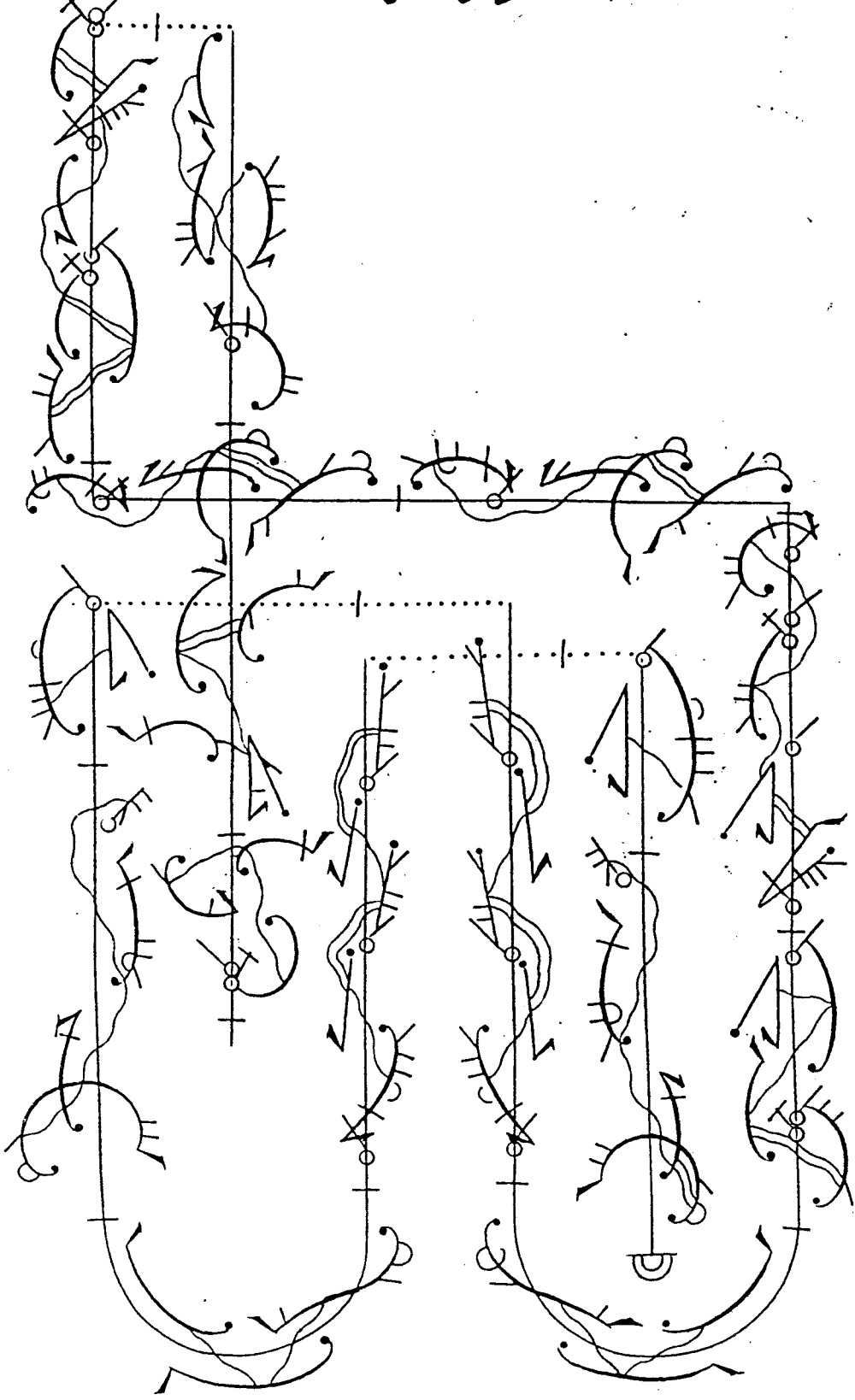
pour une femme

pas sa caille

81

Two staves of musical notation. The top staff begins with a treble clef and a key signature of one flat (B-flat). The music consists of a series of eighth and sixteenth notes, some beamed together, with occasional slurs and accents. The bottom staff continues the melodic line with similar rhythmic patterns. The notation is dense and characteristic of a folk or traditional style.

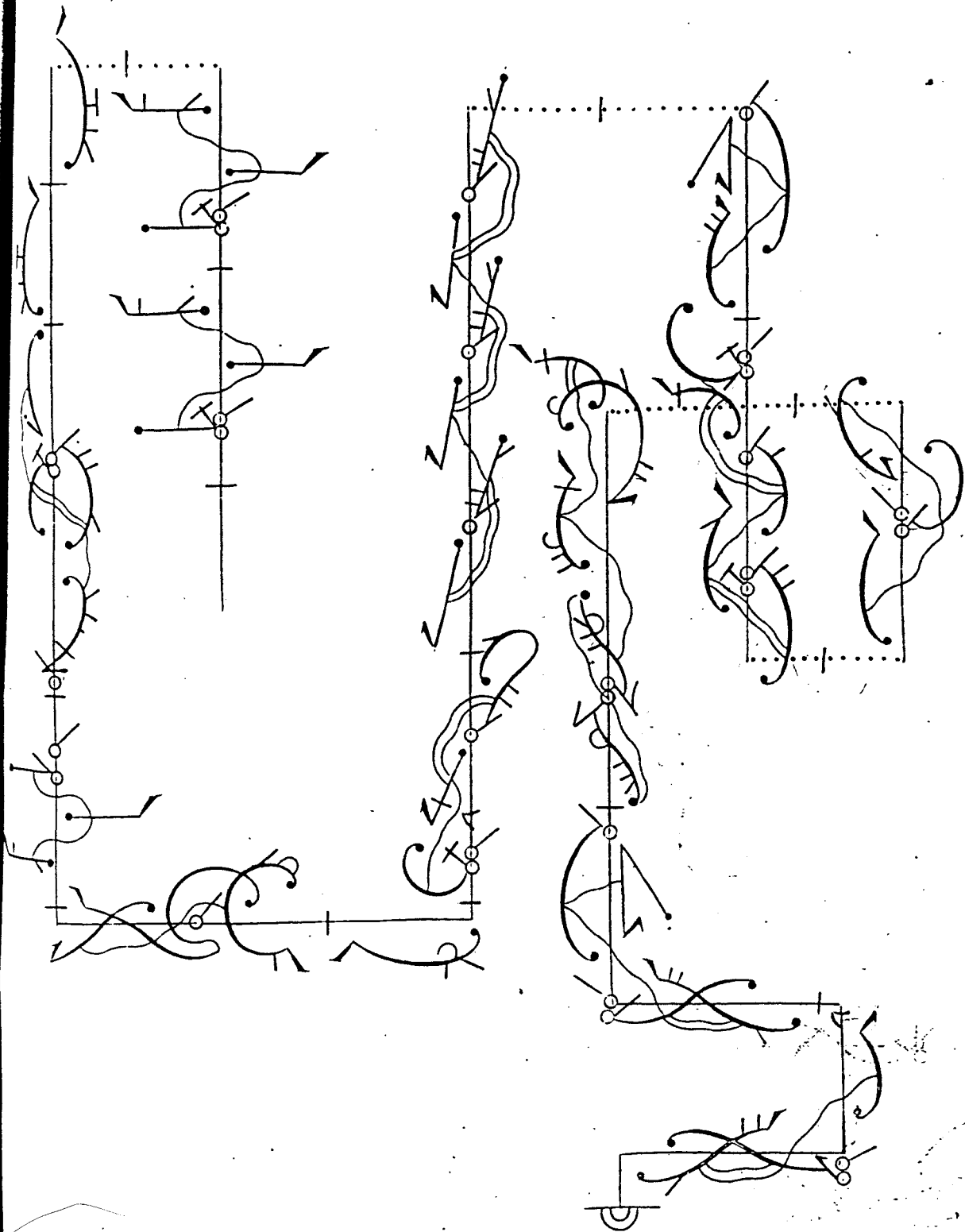
A large, intricate diagram or tablature for a stringed instrument, possibly a lute or guitar. It features a grid of lines representing strings and frets. The diagram is filled with various symbols, including circles, crosses, and arrows, which likely indicate fingerings, fret positions, or specific playing techniques. The layout is complex and appears to be a detailed guide for performing the piece on the instrument.



F I

pas sa caille

83.



84

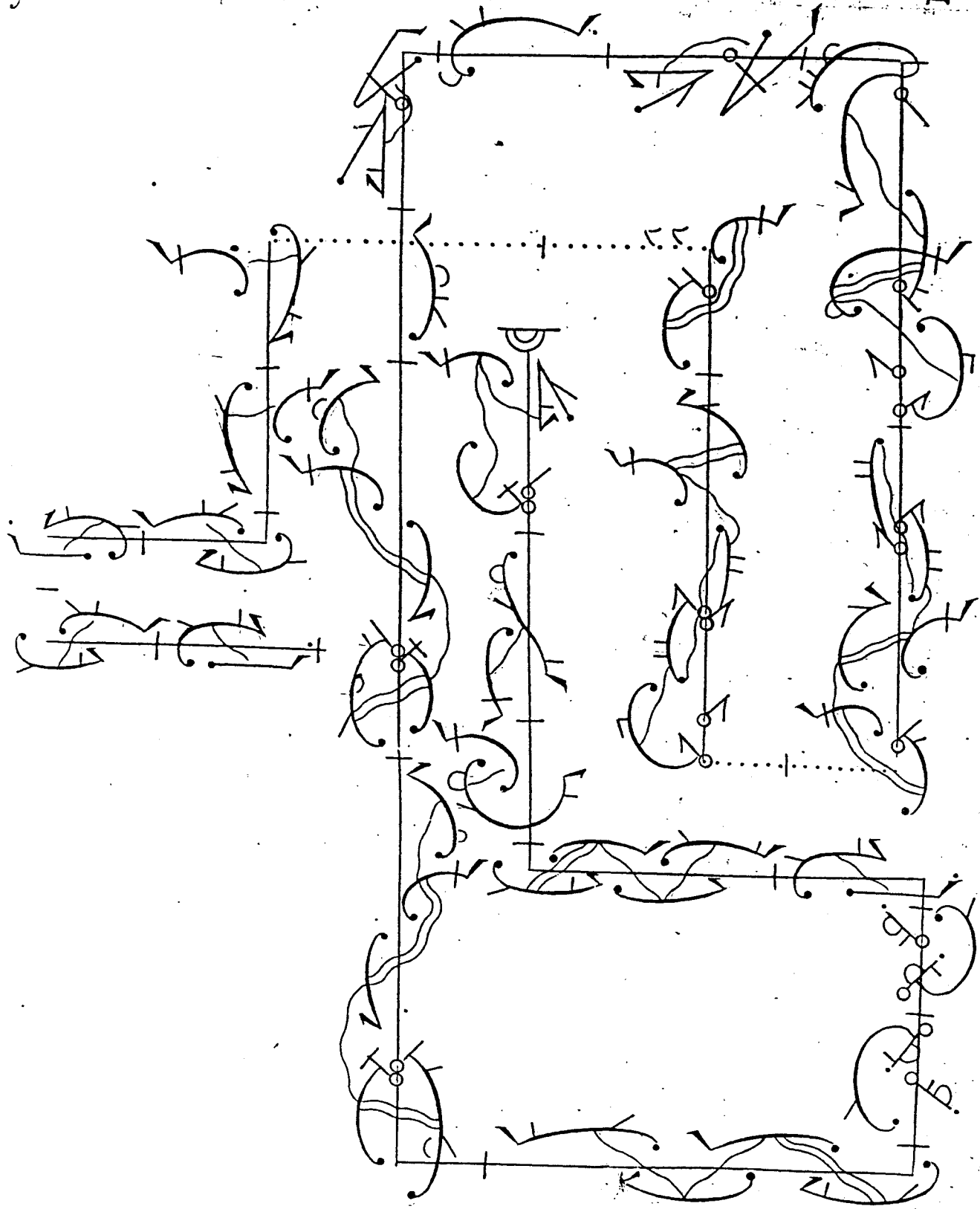
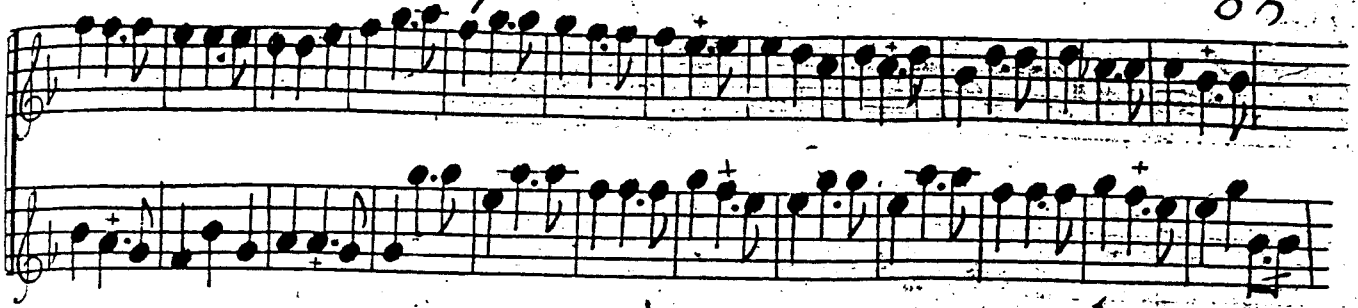
pour une femme

Two staves of musical notation. The top staff begins with a treble clef and contains a series of notes with stems, some marked with 'x'. The bottom staff also begins with a treble clef and contains similar notation, including notes with stems and some 'x' marks.

A large, intricate diagram of musical notation. It features several vertical staves with notes and stems, some marked with 'x'. The notation is highly stylized and includes various symbols, such as circles, lines, and arrows, suggesting a complex or abstract musical structure. The diagram is organized into several vertical columns, with some elements connected by horizontal lines and dotted lines. The overall appearance is that of a detailed musical score or a complex diagram related to music theory.

pas sa Caille

85



86

pour une femme